



www.myasthra.com

Introduction



Asthra is offering a job-oriented certification program for students to drive their career in a positive direction. Get hired once the course is completed and become a part of the upskill ecosystem.



**DEVELOPMENT
AND OPERATIONS**



Basics of Cloud Computing

detail about what is cloud computing and types ,etc

--

- Introduction
- Why Cloud computing ?
- Public , Private and Hybrid Cloud
- Types of cloud services
- Infra as a service
- Platform as a service
- Software as a service



www.myasthra.com

What is Virtualization?

--



- Virtualization and Cloud computing
- Virtualization Terminologies
- Types of Virtualization
- Hypervisor
- Benefits of Virtualization



wwwmyasthra.com

AWS - Solution Architect Association Certification

--

- Introduction to the AWS Service
- AWS Global Infrastructure
- Regions and availability zones
- Types of accessing AWS Resources
- Signing up for AWS Service
- AWS Management console



www.myasthra.com

Identity Access Management

--

- ➔ Introduction to IAM
- ➔ Components of IAM
- ➔ Creating and managing Users & Groups
- ➔ Creating and managing IAM Policies
- ➔ Roles and its use cases
- ➔ Multifactor Authentication



www.myasthra.com

Storage in Cloud

--



- Basics of storage system
- Difference between Simple storage S3
- Components Of S3
- Important properties of S3 Bucket
- Managing Logging S3 Bucket
- Creating life cycle Management S3



www.myasthra.com

Virtual Private Cloud

--



- Basics of Networking
- IP Address and CIDR Block
- Concept of Virtual Cloud
- Default and Non default VPC
- Subnet Concepts
- Route Tables
- Access Controls List - ACL
- Transit Gateway



EC2 Instances

--

- Basics of Virtual Server
- Components of a Virtual Serve
- Introduction to AMI - Its Use
- Inbound and Outbound rules
- Launching & Connecting to Linux
- Elastic IP Address
- Placement Group
- Instance Pricing model
- Tenancy Models
- Elastic IP Addresses
- Key Pair - Why and How
- Change instance type



Linux Fundamentals

--

- Introduction to Linux
- what is shell and its types
- Understanding the Boot Order
- Linux file directory architecture
- Creation of users in different groups
- Understanding password aging
- Permission management
- ACL commands
- Apt- cache package management
- Different commands for Monitoring
- Patch Management



Elastic Block Storage

--

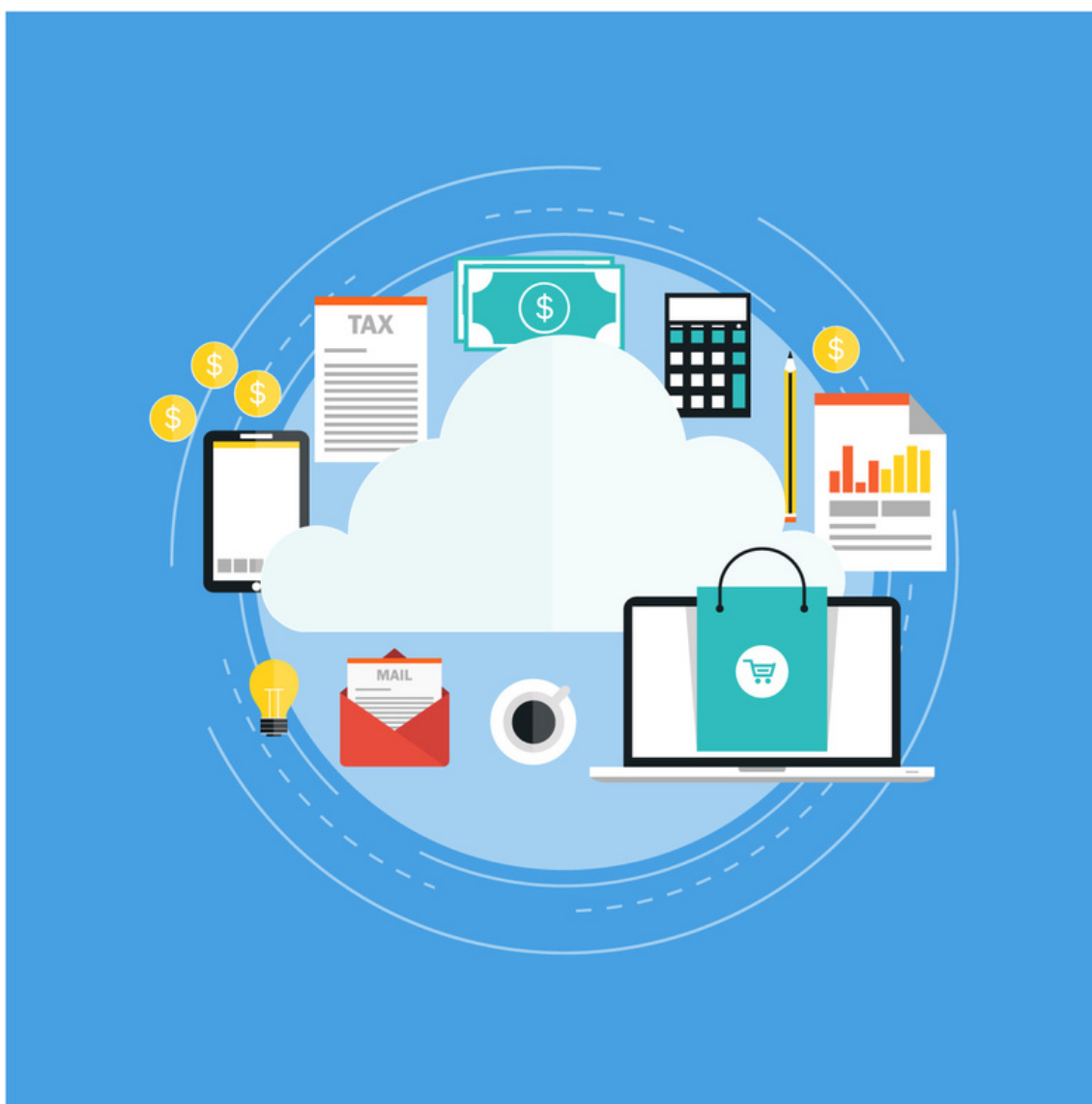
- Introduction to EBS
- Create EBS Volumes
- Attach and detach EBS volumes
- Creating and deleting snapshots
- Snapshot Restoring
- Creating volumes from snapshots
- S3 (SimpleStorageService)
- Patch Management



www.myasthra.com

Elastic File System

--



- Introduction to Elastic File System
- Configuration of EFS
- Creating and using EFS with Multiple EC2 Instances



www.myasthra.com

Elastic Load Balancer

--

- Types of Load Balancing
- Difference between Horizontal and Vertical Load balancing
- Types of Load Balancer in AWS
- Use Cases of Load balancers
- Important Components of Load Balancer
- How Health-Check Works for Load Balancer



www.myasthra.com

Auto Scaling

--

- Get Started with Auto Scaling
- Use Cases of Autoscaling
- Important Components of Autoscaling
- Create Launch Configuration
- Configuration of Autoscaling for multiple instance
- Dynamic Scaling
- Pricing

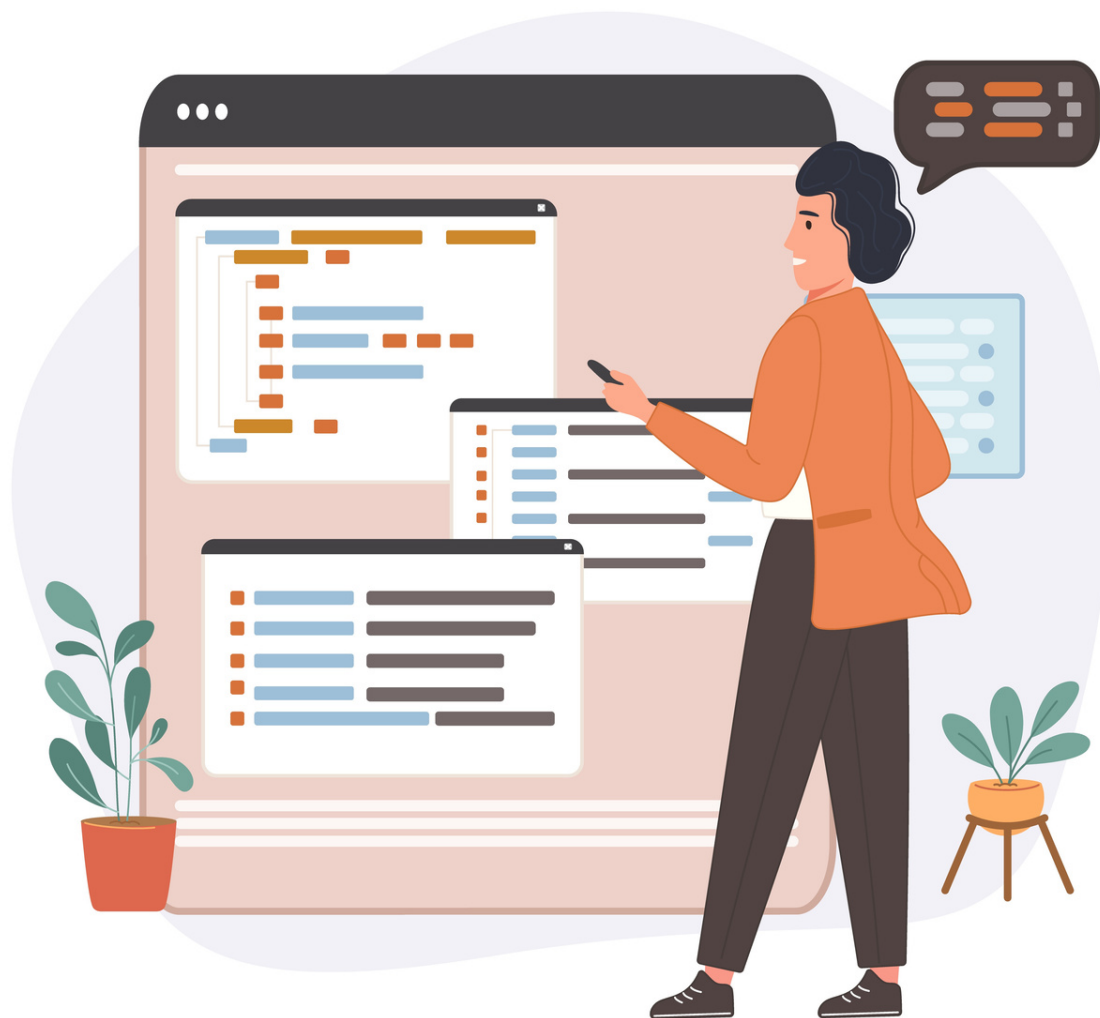


www.myasthra.com

Command Line Interface

--

- ➔ Introduction to AWS CLI
- ➔ Setting-Up AWS CLI on local machine
- ➔ AWS CLI Command Syntax walk through
- ➔ Working with S3 using CLI
- ➔ EC2 CLI working with Roles





www.myasthra.com

Cloudwatch

--

- Important Components of CloudWatch
- Creating and Managing metrics in CloudWatch
- Creating and Managing Events in CloudWatch
- Creating and Managing Dashboards in CloudWatch
- Creating and Managing Alarms in CloudWatch
- Creating and Managing Logs in CloudWatch



www.myasthra.com

Simple Notification service ..

- Introduction to Simple Notification Service (SNS)
- How SNS Works
- Important Components of SNS
- Adding Subscriber in SNS
- Managing SNS Policy



www.myasthra.com

CloudTrail

--

- Introduction to CloudTrail
- Creating and Managing trails
- Settingup trail for Rootlog in Notification





www.myasthra.com

Relational Database Service (RDS)

--

- Introduction to RDS
- Different database services of AWS:
Amazon RDS , DynamoDB , Redshiftetc
- Configuring the database
- Configuring backups
- Configuring the maintenance windows
- Connecting to the database



www.myasthra.com

Dynamo DB

--

- Creating a dynamo dB
- Adding data manually
- Configuring alarms



DynamoDB





www.myasthra.com

Cloud Front

--

- Use of Cloud Front
- Creating a cloud front distribution
- Hosting a website of cloud front distribution from S3 static website
- Implementing restrictions
- Configuring origins and behaviours



www.myasthra.com

Route 53

--

- Introduction to DNS
- How DNS Works
- Introduction to Route53
- Domain Registration in Route53
- Health Checks in Route53
- Types of DNS record
- Routing Policies in Route53



www.myasthra.com

ELASTICBEANSTALK-EB

--

- Introduction to Elastic Beanstalk
- Important Concepts in EB
- Getting started with EB
- Managing Environments in EB
- Managing Applications in EB
- EB Platforms



www.myasthra.com

LAMBDA

--

- Important Components of Lambda
- Creating simple function in Lambda
- Sample Coder unusing Lambda
- Creating and Managing triggers in Lambda





www.myasthra.com

Applications

--

- SQS
- Elastic Transcoder
- API Gateway
- Kinesis
- Web Identity Federation & Cognito



www.myasthra.com

AWS Security Management

--

- Security Practices for Cloud Deployment
- AWS Responsibilities and Securities
- Cloud Trail
- Trust advisor



www.myasthra.com

AWS Troubleshooting

--

- Troubleshooting EC2 instance
- Troubleshooting using Cloudwatch
- Troubleshooting using ELB
- Troubleshooting by using Cloudtrail
- Troubleshooting by using Cloudfront





www.myasthra.com

Troubleshooting and Price Calculator

--

- ➔ AWS Best Practices (Cost+Security)
- ➔ AWS Calculator & Consolidated Billing





www.myasthra.com

InfraStructure as a code

--

- Understanding what IAAC is
- Introduction to Terraform
- Component of Terraform
- Basics code of Terraform



www.myasthra.com

Organization and Resource Groups (Beginner Level)

--

- What are AWS Organizations
- Components of AWS Organizations
- Introduction of Resource Groups
- Creating and Managing Resource Groups
- Managing multiple accounts



www.myasthra.com

Elastic Container Services (ECS)- Beginner

--

- ➔ Intro to Docker
- ➔ Types ECS-EC2 and Fargate-Elastic Container Services (Beginner)



Devops Fundamentals

--

- An understanding of Devops and the modern Devops tool sets
- The ability to automate all aspects of a modern code delivery and deployment pipeline using:
 - Source code management tools CVS, Git
 - Build tools – Apache ant, Maven
 - Test automation tools – J Unit
 - Continuous Integration Tools – Jenkins
 - Configuration management tools Ansible
 - Monitoring tools – Nagios or Sonarqube



www.myasthra.com

Tools Used



Maven





www.myasthra.com

Our Clients

CORPORATE CLIENTS



ACADEMIC CLIENTS





www.myasthra.com

*Thank
You*